

NUSOD

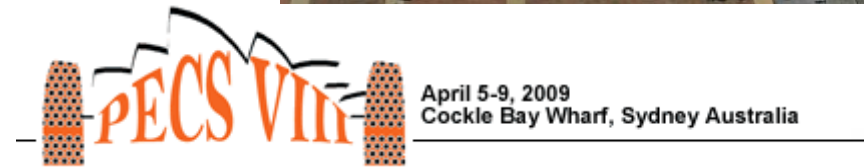
Sydney July 11-15

2016

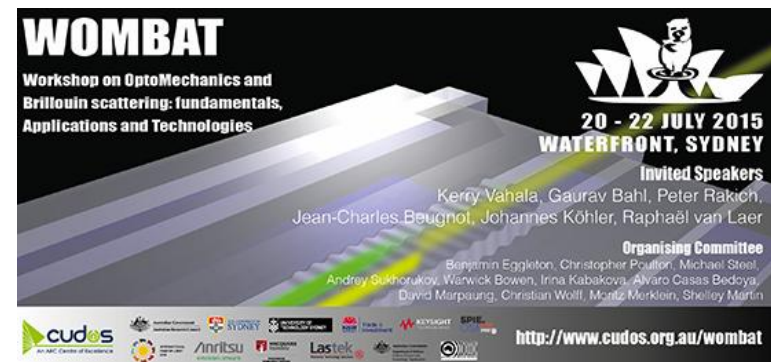
- School of Physics, University of Sydney
- School of Mathematical and Physical Sciences, University of Technology Sydney (UTS)
- Department of Physics and Astronomy, Macquarie University



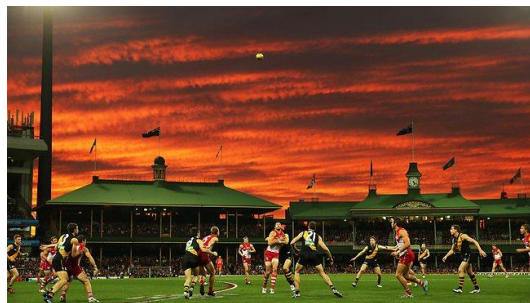
- Australia has been an international centre in theoretical and experimental optics and electromagnetism for forty years. Optics remains one of its strongest research fields
- Sydney hosts major optics programs at four international known universities with 4 national Centres of Excellence targeting optical technologies



- Key optics conferences that have been held here include IQEC1996, PECS2009, OECC/ACOFT2008, IQEC-CLEO Pac Rim 2011, SPIE Micro and Nano Materials 2015, WOMBAT 2015
- The local organisers have had high level roles in these and other meetings



- Sydney is Australia's truly international city and is at the heart of Australia's economy. Sydney is ranked first in the Asia Pacific in terms of intellectual capital and innovation
- Beautiful harbour, beaches, and wildlife, as well as world-class restaurants and entertainment
- An outdoors, relaxed and sporting culture
- Internationally oriented, offering a welcoming environment for overseas visitors
- Gateway to Australia's many other attractions
- For more information visit www.sydney.com



University of Sydney Camperdown campus

- Australia's oldest university.
- The campus is located close to the Sydney Central Business District (CBD), and is approximately 30 minutes by car from Sydney Airport.
- Easy access to the city by bus, train, taxi or foot



University of Sydney Campus Map



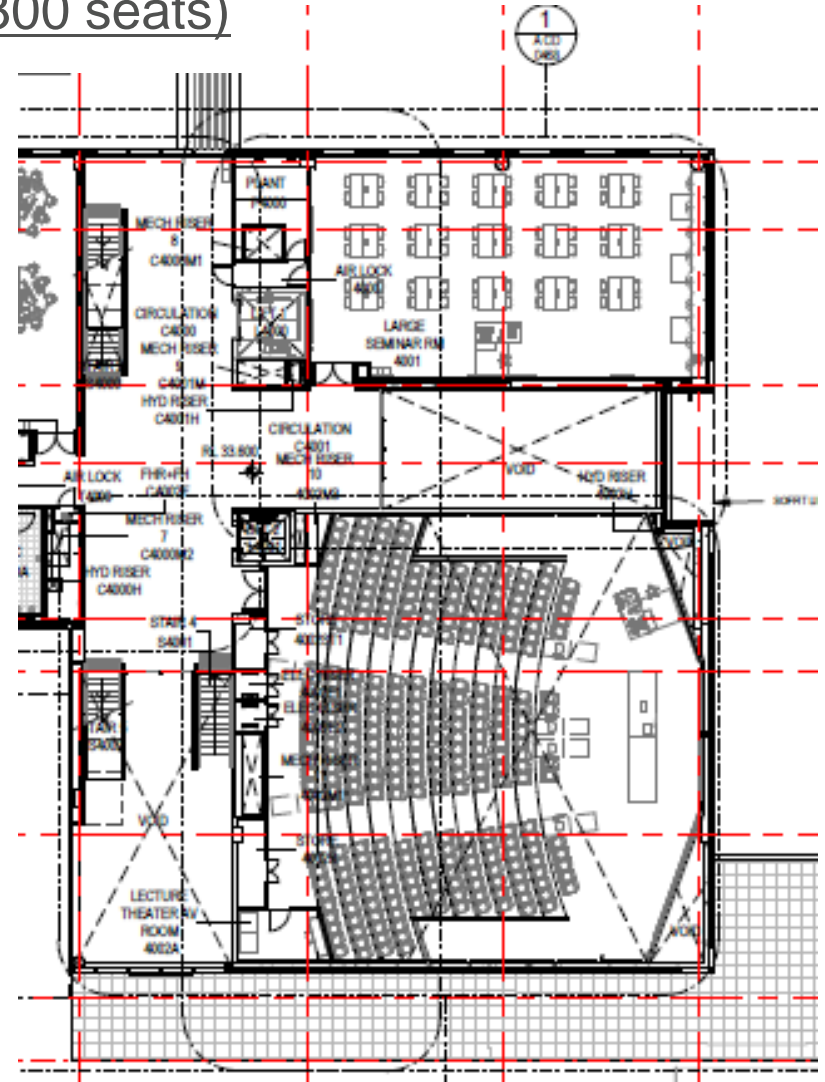
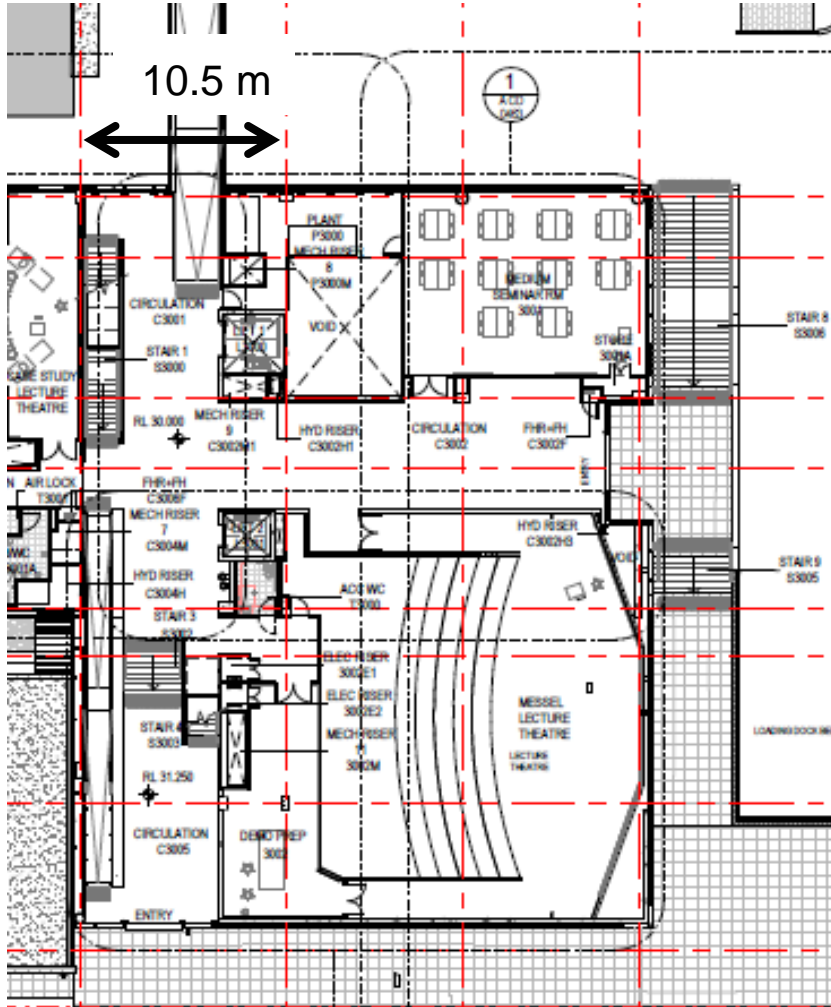
School of Physics
and Conference Venue

The meeting will be held in the newly-constructed Australian Institute for Nanoscience (AIN) on the University of Sydney's Camperdown campus.

- Opens July 2015
- State of the art lecture theatre and meeting rooms
- Numerous university cafeterias
- Dozens of restaurants of diverse cuisines within 10 minutes walk



Meeting space—Messel lecture theatre (300 seats)



St John's college: \$99/night



Alishan international
guesthouse: \$120/night



Rydges Camperdown: \$149 / night



Adara camperdown apartments:
\$219/night



There are a large number of other good hotels within a short walk of the main campus



- Abu Dhabi (15:00)
- Auckland (2:40)
- Bangkok (9:20)
- Beijing (11:00)
- Dallas/Ft Worth (17:10)
- Dubai (15:00)
- Guangzhou (9:20)
- Hong Kong (9:10)
- Honolulu (10:10)
- Johannesburg (14:40)
- Kuala Lumpur (8:10)
- Los Angeles (15:00)
- New Delhi (13:00)
- San Francisco (14:50)
- Santiago (14:10)
- Seoul (10:20)
- Shanghai (9:40)
- Singapore (7:50)
- Tokyo (9:40)
- Vancouver (15:30)

Flight times (summary):

from the US west coast: ~14-15 hours

from Singapore: ~8 hours

from Europe (via Dubai or Singapore): ~24 hours

Bondi beach

While golden sands, turquoise waters and perfect waves make Bondi Beach an iconic Sydney attraction, there is plenty to do beyond the surf. Fine dining, eclectic shopping markets, gorgeous coastal walks and a buzzing nightlife can all be experienced in Bondi.



Taronga Zoo

Visit Australia's unique wildlife against the spectacular backdrop of Sydney Harbour. Over 4,000 animals to see, over 20 keeper talks and shows a day, tours, events & concerts.



Bridge Climb

Climb to the top of Sydney's iconic landmark and experience the best view in Sydney!

Ferry trips and tours of the Harbour

There are literally dozens of coves and beaches inside the Harbour accessible by ferry to be explored



The Blue Mountains

Just an hour and a half from Sydney, the Blue Mountains offers spectacular views and a range of walks through one of Australia's most beautiful national parks



The Royal National Park

To the south of Sydney, this coastal park offers stunning clifftop walks and secluded beaches

Further afield:

The Great Barrier Reef (~2-3 hours flight time)



The Outback and Uluru (~ 2-3 hours flight time, or a few days drive)



Melbourne and Brisbane (70 mins flight)